



WELCOME TO WELLING CORNER DENTAL PRACTICE

Established in the 1960's, Erik Lijesen took ownership in January 1990 and has transformed the practice into the successful and popular practice that it is today.

We are a private practice providing a wide range of treatments. These include cosmetic dental solutions such as implants, smile makeovers, veneers, same-day CEREC crowns, orthodontics and whitening. Our practice also offer's general dentistry services to look after all yours and your family's needs. We work alongside Denplan to offer our patients a very popular and flexible monthly dental plan with an added insurance included.

We are passionate about our work. For us, as well as keeping teeth and gums in tip-top condition, dentistry is about transforming lives. We are here for you. Our team is comprised of highly accomplished dental professionals who have many years of experience between them. They possess the right knowledge and skills with which to give you the best results. One of these skills is being able to understand your needs. We'll treat you patiently and with kindness, making your experience as stress-free as possible.

TREATMENTS

We offer a wide range of services:

- General Dentistry
- Dental Implants
- Same-day CEREC Crowns
- Cosmetic Dentistry
- Full Smile Makeovers
- Orthodontics including Invisalign
- Tooth Whitening
- Family Dentistry
- Sedation for nervous patients

MEET THE TEAM



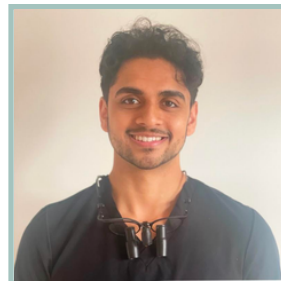
DR. ERIK LIJESSEN
Principal Dentist

GDC Number: 62085
Tandarts Amsterdam 1987

Erik is passionate about dentistry. For him, it is more than just a service: it is a precise art and a means to improve the lives of his patients. His philosophy is built around the idea of continual improvement, so that he is always delivering the best and most cutting-edge services.

He is a great believer that to excel at cosmetic dentistry you have to be skilled in a similar way to an artist. It is important to consider not only the teeth but the personality, skin tone and facial symmetry when creating the best smiles. A great artist, a great painting; a great dentist, a beautiful smile.

He first qualified with a degree in dentistry at the Vrije University of Amsterdam, graduating in 1986 and has continued to broaden his skill set, alongside being a Master of general dentistry.



DR. KIRAN SOOKARRY
Dentist

GDC Number: 290550
BDS Uni of Sheffield 2020

Kiran's ethos in dentistry is to provide evidence-based treatment in a minimally invasive way, whilst maintaining excellent patient care. Kiran graduated from the University of Sheffield; a world-leading research university and a member of the Russell Group.

Kiran has undertaken further training in the latest Restorative and Aesthetic techniques, improving patients' smiles and making them feel more confident.

Kiran strongly believes in transparent and honest communication to create an optimal patient journey which can be reflected from his patient reviews. For every patient visit, Kiran aims to provide value; ensuring they leave happier with better oral health and knowledge.

Outside of work, Kiran loves to travel and explore different cultures. He regularly trains in the gym and takes part in outdoor activities such as golf and skiing. His ideal weekend would be spent reading, cooking, and catching up with close friends and family.



TRACEY MURPHY

Hygienist
GDC Number: 4690
CEB Dip Dent Hygiene 1994

Tracey has over 20 years of experience in the field of Oral Hygiene. She has taught in prestigious dental hospitals and has implemented training programs for oral hygienists across the country.

Tracey has gained a wealth of knowledge; she started her professional career as a dental nurse and worked her way up to a senior nursing position at Kings College Hospital London.

She is exceptionally popular with our patients. This is down to her caring attitude combined with an easy-going manner, as well as her expertise. Our patients benefit so much from her expert advice that many of them ask to come back between appointments.

Tracey treats many celebrity patients, but sometimes their fame goes over her head. One day, she was chatting to a gentleman during a treatment. She asked him what he did for a living, and he told her he was a pianist. 'Are you any good?' she said. At that point, the penny dropped: the guy's name was Jools Holland.



DR. MICHEL HEIDWEILLER

Dental Implantologist
GDC Number: 61400
Tandarts Amsterdam 1986

When it comes to dental implants, Michel is at the top of his game. He has a BSc in Biochemistry (Rutgers University, New Jersey) and went on to complete a degree in dentistry at the Vrije University of Amsterdam, graduating in 1985.

Michel continued his postgraduate education at the renowned academic centres UCLA California and the University of Berne in Switzerland. He also worked an apprenticeship alongside Dr. G de Lange, a ground-breaking researcher of cell biology.

Throughout his education, Michel's special interest has always been in the field of oral bone and oral tissue. This has formed a strong foundation upon which he built a successful career in the field of dental implantology.

With nearly 30 years' experience, Michel has successfully completed over 3,000 implant procedures and has gained an international reputation for excellence in dental implantology.

Michel donates a portion of his fee to the charity Operation Smile, which aims to improve the quality of life for young people in some of the poorest areas of the world.

FEE GUIDE

TREATMENT

Clinical Examination		£42
Cosmetic Consultation		£42
X-Rays (each)		£18
Scale & Polish (with Dentist)		from £60
Hygienist Appointment	1 hour	£122
Home Whitening Kit Composite/White	(With Custom Made Trays) (excludes consultation fee)	£289
Fillings		from £80
Icon - Drill Free Restorations		from £135
Root Canal Treatment		from £470
Extractions		from £75
CEREC Porcelain Crowns/Inlay/Onlay	(Made Here in 1 Appointment)	from £530
CEREC Porcelain Bridge	(Made Here in 1 Appointment) per Tooth/Unit	from £655
Porcelain Crowns	(Laboratory Made)	from £655
Porcelain Crowns/Veneers	(Smile Design)	from £790
Porcelain Bridge	(Laboratory Made) per Tooth/Unit	from £655
Composite Bonding	per Tooth	from £150
Cosmetic Tooth Contouring	per Tooth	from £100
Gum Contouring	per Tooth	from £100
Implants Including Restoration	per Implant	from £3,000

ORTHODONTICS

Invisalign for both Upper & Lower Arch

(Including retainers)

from £3,000

Fixed Retainers

from £185

Removable Retainers

from £100

DENTURES

Denture Set (Depending on Size and Material)

£500 -

£1,200

As material prices fluctuate our prices may be effected by this and are subject to change from time to time, however we strive to avoid this whenever possible.



There is no need to wait or delay your treatment, as we are able to offer our patients a finance option of 0% over 12 months, or 9.9% above 12 months through Chrysalis Finance to enable you to spread the cost of treatment*.

Welling Corner Dental Practice Limited trading as Welling Corner Dental Practice is an Appointed Representative of Chrysalis Finance Limited, which is authorised and regulated by the Financial Conduct Authority to carry out the regulated activity of credit broking. www.chrysalisfinance.co.uk

**Terms and Conditions apply. Subject to status. Representative example. Cash price of goods/amount of credit £3,000; 24 monthly payments of £137.74; Total amount repayable £3305.84; Representative 9.9% APR variable.*

APPOINTMENTS

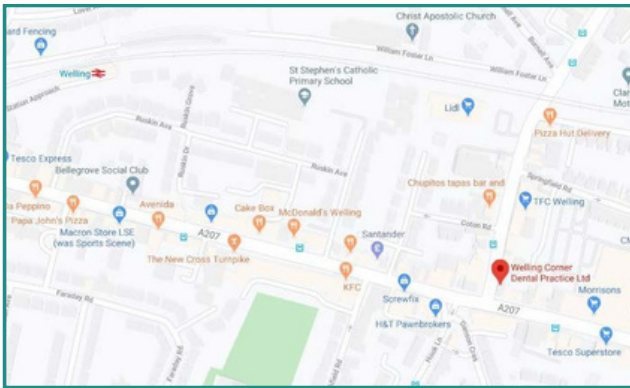
To arrange a suitable appointment for yourself please contact the practice on 020 8303 7445, or e-mail us at reception@wellingcorner.dental if you have any questions.

If you have an emergency out of surgery hours, please call our practice on 020 8303 7445. There will be an emergency message including telephone numbers to call.

Our normal hours of business are:

Monday	10am - 7pm
Tuesday	9am - 6pm
Wednesday	9am - 6pm
Thursday	9am - 8pm
Friday	9am - 6pm

HOW TO FIND US



Contact us today to set up your appointment:

-  020 8303 7445
-  reception@wellingcorner.dental
-  www.wellingdental.co.uk
-  113a High Street,
Welling, Kent, DA16 1TY



Public Transport

Welling Train station - 10 minute walk
Turn right out of the station at the main entrance/exit, take the next left and left again onto the High Street. Keep walking until you reach the traffic lights at a main cross roads. Practice will be directly in front of you. The entrance is situated in Upper Wickham Lane (Above Original Herbs)

Buses

There are buses, 96, 51, 486 & more that come directly to Welling High Street. Bus stops are within a 1-2 minute walk.

Parking

Parking is available in Morrisons, situated behind the practice, and Tesco car parks. There is also a council car park at the end of Springfield Road.